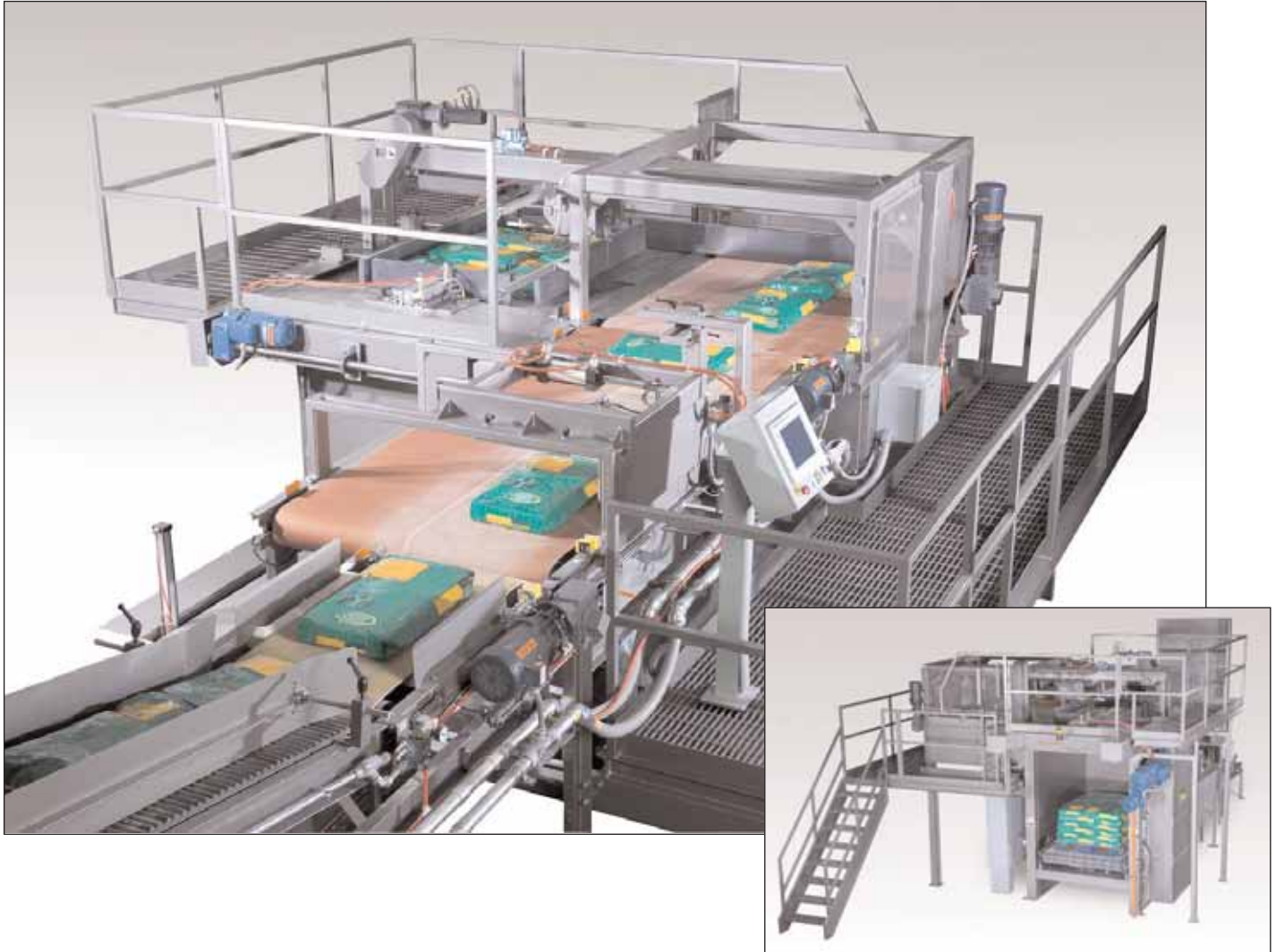


Automatic High Level Bag Palletizer – Master 3500



Features

- Add or modify patterns from HMI
- A-B Panelview Plus HMI
- Choice of turning post or servo motion controlled pop-up turner
- Touchscreen empty pallet control station with fault display
- Accumulation/pacing conveyor with full length bag guides
- Indexing belt layer forming conveyor
- Layer pusher with center track bearing
- Pallet dispenser with conveyor
- Operator platform with stairway
- Shop assembly and tested with customer product prior to delivery
- Robust, heavy-duty construction
- Variable frequency drive on lift conveyor
- Timing belt driven stripper plate and layer pusher drive
- Selectable stroke layer squaring cylinders
- Adjustable dwell layer compression
- Allen Bradley CompactLogix PLC

Automatic High Level Bag Palletizer – Master 3500

The Master 3500 Automatic Bag Palletizer is the industry leader in bag palletizing. The machine has excellent reliability and is backed by the best parts and service departments in the industry.

The Master 3500 works by accepting filled bags from upstream equipment. These bags enter the palletizer after being separated by the accumulation pacing conveyor. The turnpost with a turn assist mechanism (or servo driven pop-up turn device) automatically rotates filled bags that require turning. The turned bags are then indexed to the layer forming conveyor in a row. After each row is complete, they are then advanced onto the palletizer stripper plates by the layer pusher. This process repeats until a complete layer is formed on the palletizer stripper plates.

Selectable stroke layer squaring plates extend to contain and square the layer. The stripper plates open while the squaring and pushing plates hold the layer in position as the layer is deposited onto the load stack.

After each stripping cycle, the filled pallet load is lowered and conveyed out. A new empty pallet is conveyed into the pallet lift section, then raised to accept the first layer of the next full pallet.

When the pre-selected number of layers is obtained, the filled pallet load is lowered and conveyed out. A new empty pallet is conveyed into the pallet lift section, then raised to accept the first layer of the next full pallet.

Optional Features

- Servo motion controlled layer pusher
- Servo stripper plates
- Custom pass height elevations
- Wing height platform with handrail
- Automatic centering bag guides
- Stainless steel contact surfaces
- Servo pallet lift motor
- Slipsheet dispenser
- Bag handling conveyors
- Top film dispenser
- Top cardboard dispenser
- Full pallet conveyors
- Stretchwrapping Systems

Optional Slipsheet Dispenser



Optional Checkweigh System



Servo Pallet Lift

Specifications

PRODUCTION SPEED

Turnpost	Up to 2400 bags per hour
Turn device	Up to 2100 bags per hour

ELECTRICAL POWER REQUIREMENTS

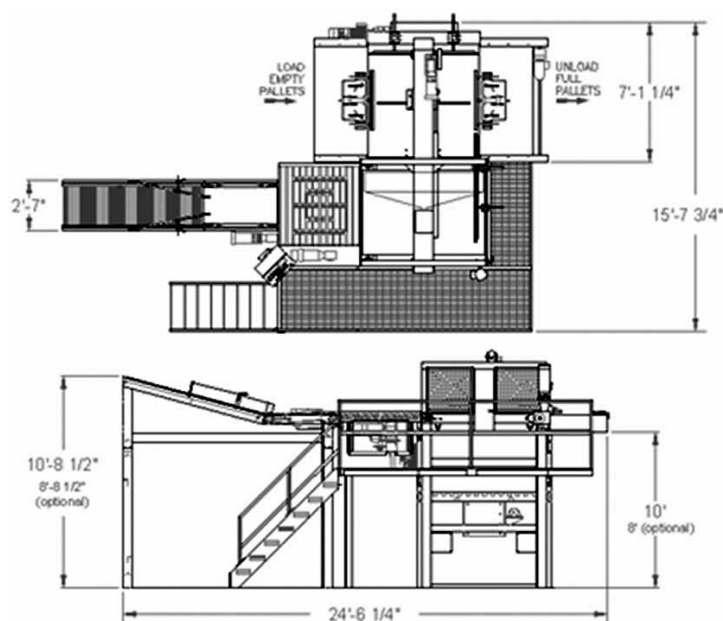
Input Power	480 volts, 3 phase, 60 hertz
Control Circuit	24 VDC
Electrical Service	100 amp supply line

AIR REQUIREMENTS

Operating Pressure	80 psi (5.4 atm)
Air Consumption	2 cubic feet per minute (5-bag pattern at 30 BPM)

LOAD DATA

Maximum Load Size	54" x 48" (1372 mm x 1219 mm)
Maximum Load Height	Up to 89" (2261 mm) with pallet
Maximum Load Weight	4000 lb. (1814 kg)



All sales are subject to our prevailing terms and conditions. Illustrations and specifications are subject to change without notice. Machines shown without guards are for illustrative purposes only. Guards are supplied and must be in place before operation.